



SPOTLIGHT OFF - THE NEGATIVE

Stephanie Faber
Interactive Installation

**SPATIAL PROJECTION
AND TRACKING**
J.Habakuk Israel

The Spotlight

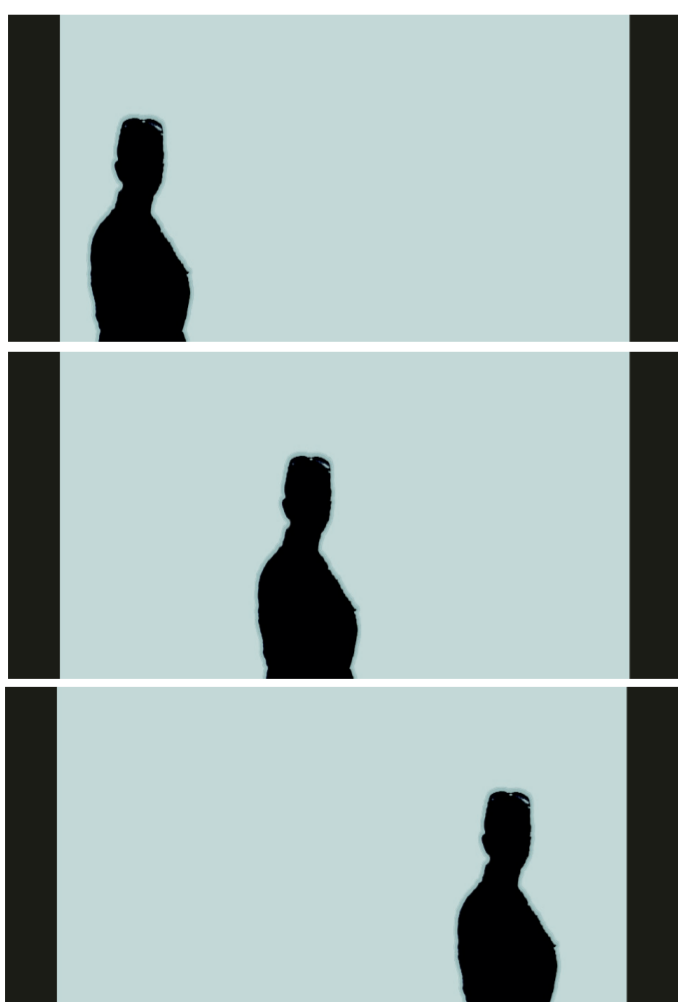
A spotlight is a general term for any lighting instrument used on stages which projects a bright beam of light onto a performance space. Spotlights are controlled by a spotlight operator or an DMX-Control who tracks actors around the stage. Some spotlights can be fitted with color changers and gobo holders to create a variety of effects. The Spotlight is often used to show the audience the importance of an act or to underline the dramatic theory of a play or show.

The Intention

In my personal history as a lighting-engineer i often experenced that the spectators at a show or play do not recognise the light in spite of it is imperative to get the experience the play or show intended. I want to reverse that effect and put the light into the "spotlight".

The Installation

By motion tracking, peoples movement are caputered. The devices are programmed to shine their light everywhere **BUT** in the space the person is moving. This will project a negative Image of the person which is moving, but because of the negative spotlight the viewer is forced to look at the light in a differnt way.



Example for a vertical projection. Woman passing by seeing her !negative "refelction".



Example for a negative spotlight installation on stage



The light Illuminates everything but the person.